

| Pin | Function |
|-----|----------|
| 1 | MISO |
| 2 | VCC |
| 3 | SCK |
| 4 | MOSI |
| 5 | RESET |
| 6 | GND |



ULN2068B

Steckertyp:
5pol Stecker AKL182/AKL169 oder
AKL267 Doppelstockklemmen

Ausgänge 9-12

PA0 6
PA1 11
PA2 3
PA3 15

11 12 13 14

01 02 03 04

8 10 2 16

R14 40
R16 40
R18 40
R20 40

1 2 3 4 5

CONN_5

CONN_4
P9

4 3 2 1

VDD

VCC 7 14

C13

100nF
Optional
SMD 0805

U4

NC VS

GND GND GND

4 5 12 13

ULN2068B

Steckertyp:
5pol Stecker AKL182/AKL169 oder
AKL267 Doppelstockklemmen

Ausgänge 15-18

PA4 6
PA5 11
PA6 3
PA7 15

11
12
13
14

NC
VS

7
14

U5

C14

100n
optional
SMD 0805

01 8
02 10
03 2
04 16

R15 40
R17 40
R19 40
R21 40

1
2
3
4
5

CONN.5

CONN.4
P10

4
3
2
1

VDD

1
9

ULN2068B

Steckertyp:
5pol. Stecker AKL182/AKL169 oder
AKL267 Doppelstockklemmen

4
5
12
13

GND
GND
GND

[illegible]

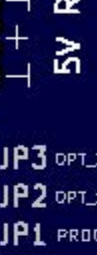
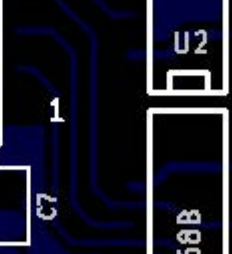
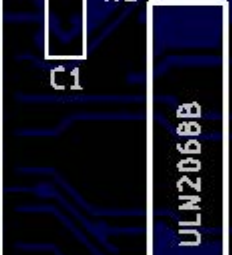
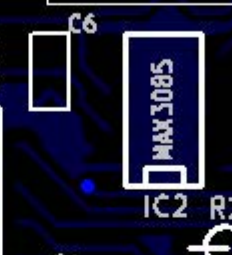
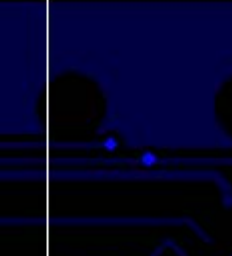
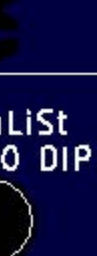
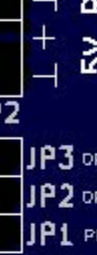
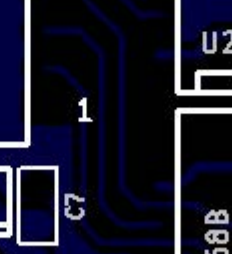
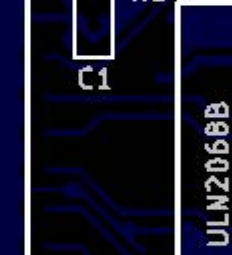
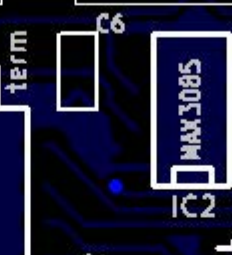
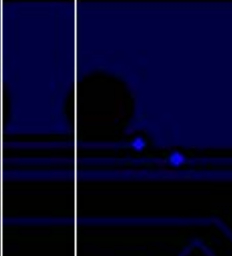
C7, C9 100n Keramik, RM2,5
 C8 2200uF / 35V, RM5mm, 12,5mm Durchmesser
 C10 470uF / 10V, RM2,5mm, 6,5mm Durchmesser



| | | |
|----------------------------|---------------------------------------|-----------------|
| File: 485decoder.sch | | |
| Sheet: / | | |
| Title: MoBaList THT | | |
| Size: A3 | Date: 16 feb 2012 | Rev: 2.0 |
| KiCad E.D.A. | eeschema (2012-01-19 BZR 3256)-stable | Id: 1/1 |



1 2 3 4 5 6 7 8 9 10 + 11 12 13 14 15 16 + 17 18 19 20 + 21 22 23 24 +



M. Volk
03.2012

MoBaLiSt
Rev 2.0 DIP

5V RS485

JP1 PROG
JP2 OPT_1
JP3 OPT_2

P3 ISP

activity prog +5V_OK

BidB_VCC=5V

| K2K1 | |
|------|---|
| 1 | 2 |
| 3 | 4 |
| 5 | 6 |
| 7 | 8 |

1 + 1 A B