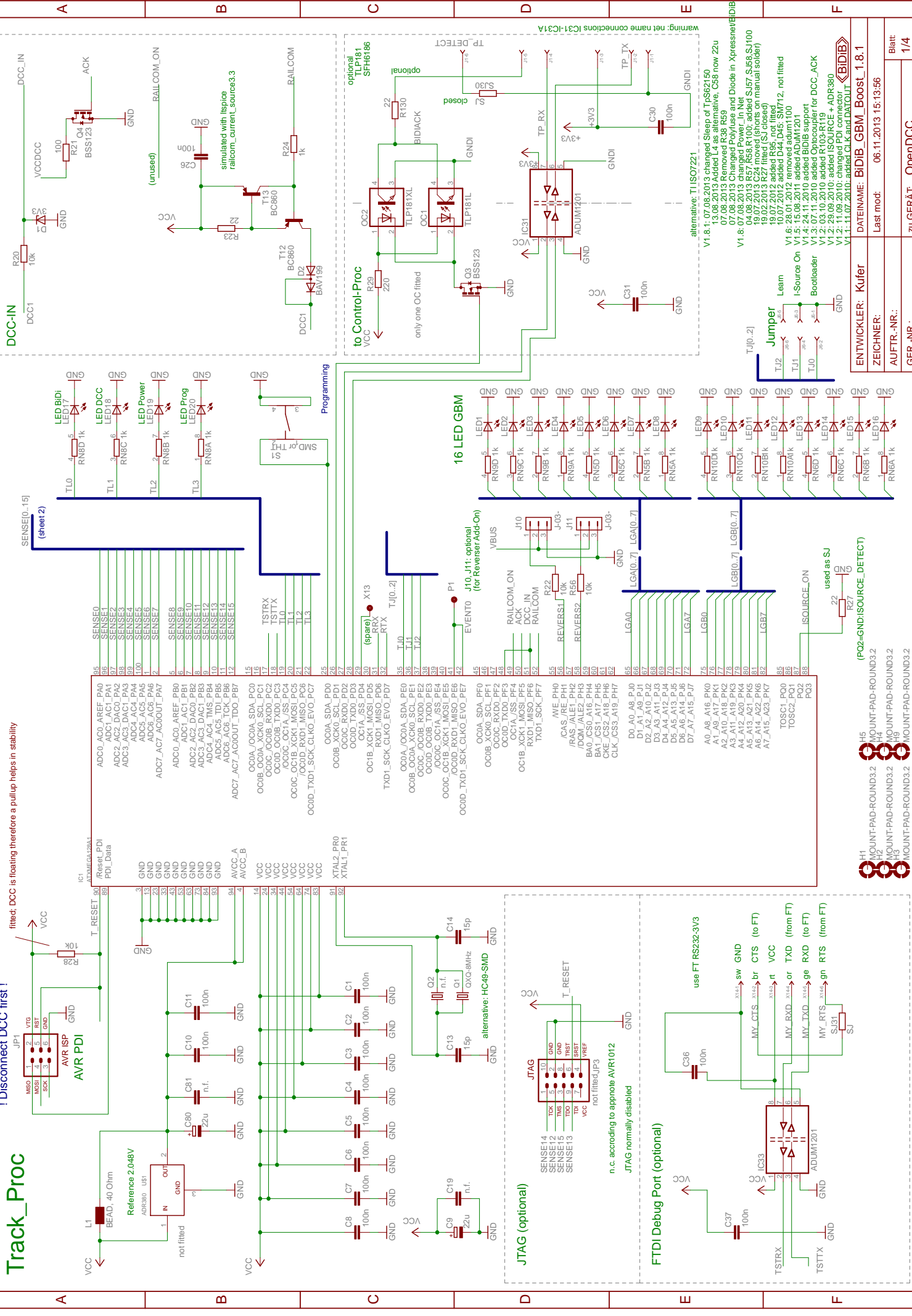


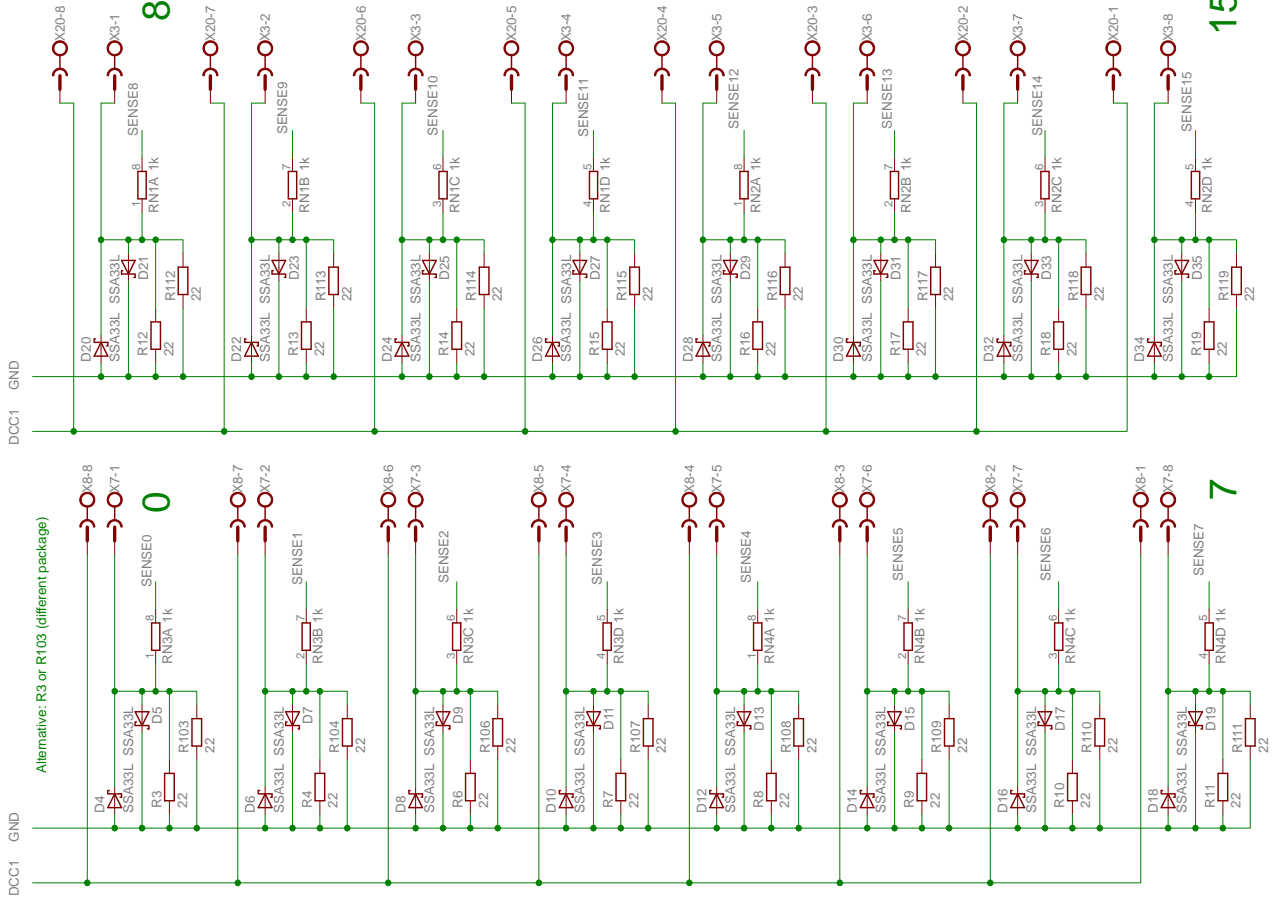
01 02 03 04 05 06 07 08



ENTWICKLER: Kufer	DATEINAME: BIDB_GBM_Boost_1.8.1
ZEICHNER:	Last mod: 06.11.2013 15:13:56
AUFTR.-NR.:	
GER.-NR.:	zu GERÄT: OpenDCC
Blatt 1/4	

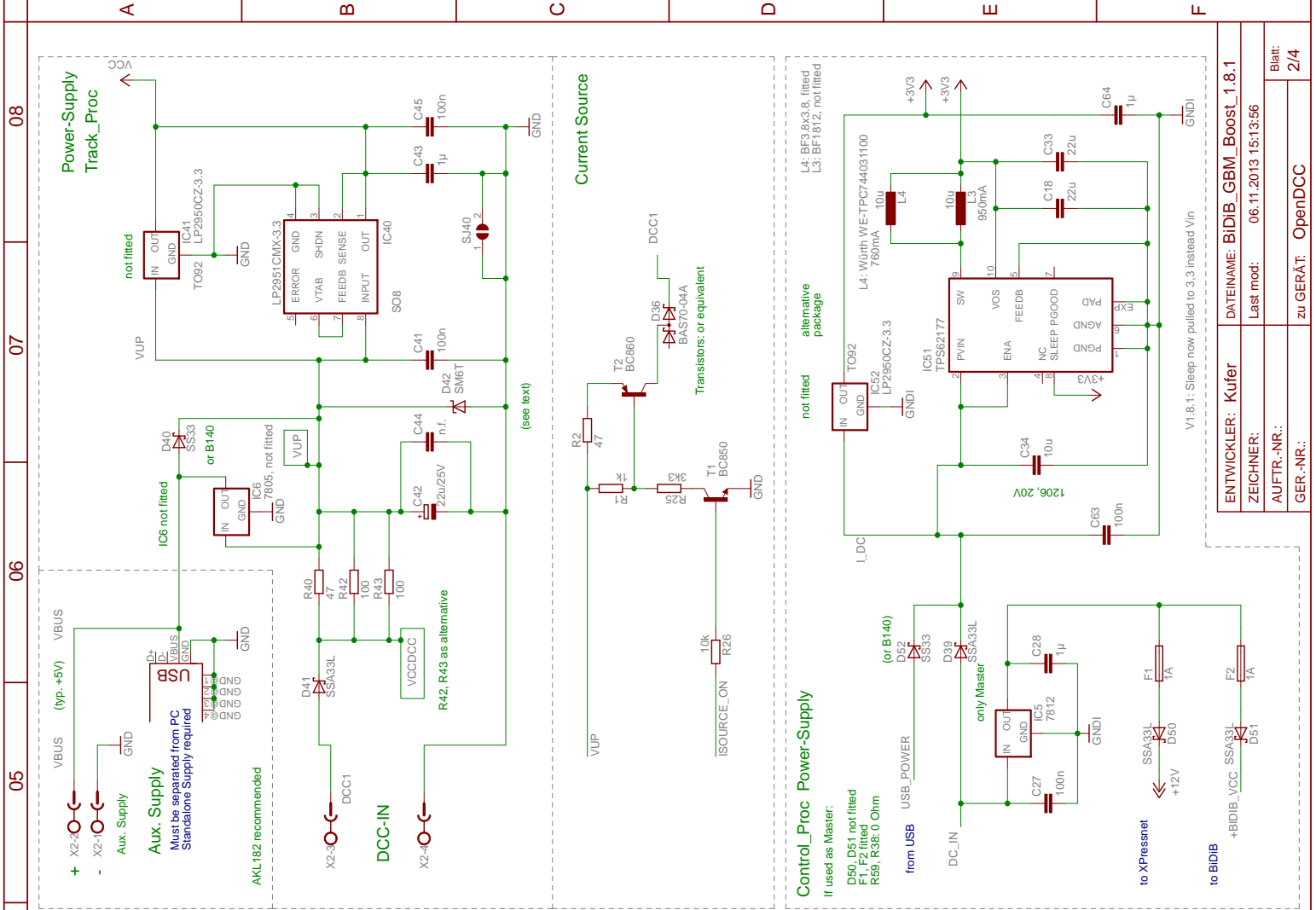
Track, Sensors, Power

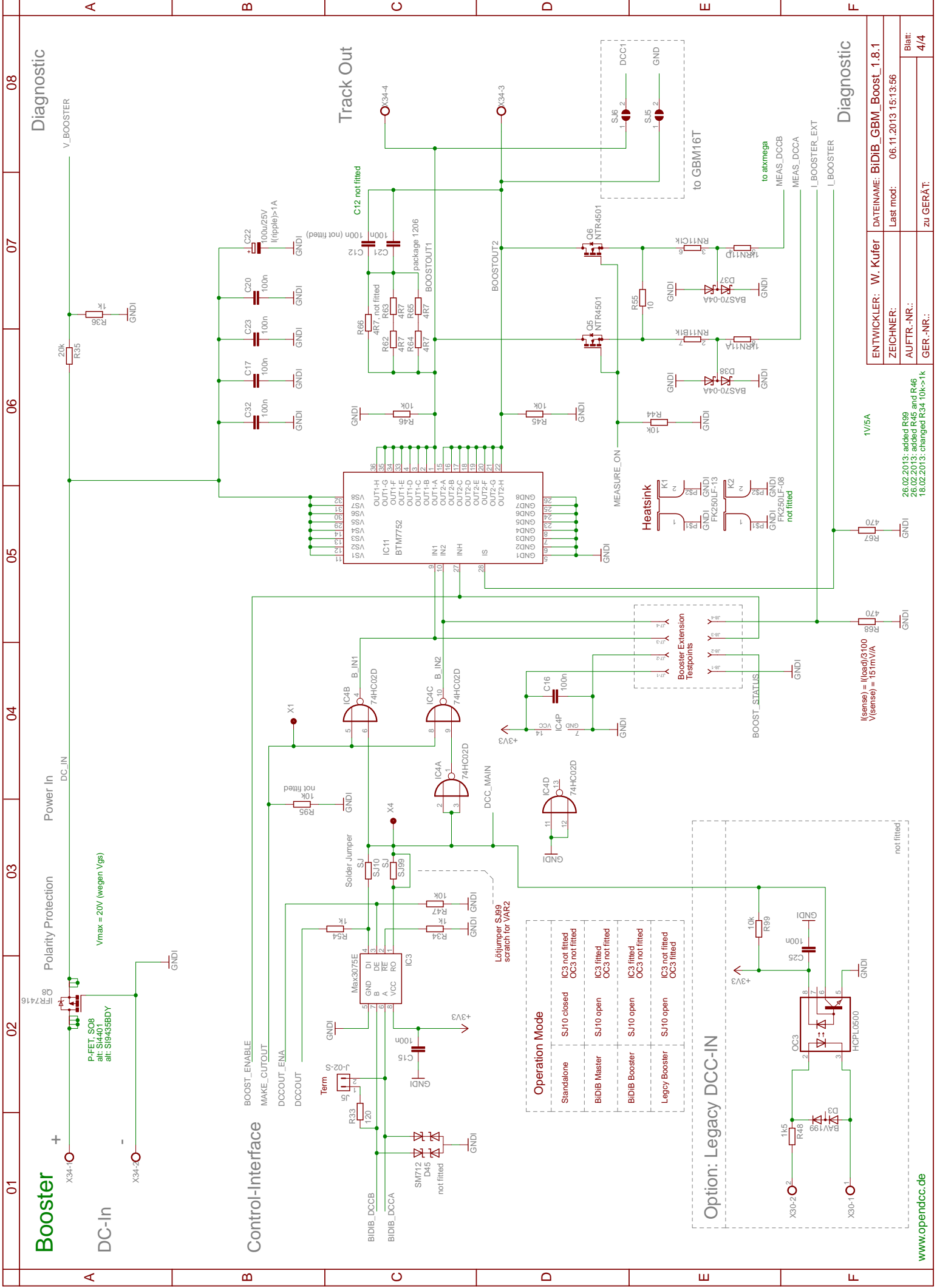
Note: for railcom compliance 5.6 ohms is required



use only SMD, THT-Resistors are not fitted

V1.6: 29.01.2012 swapped connectors to RIA Plug





Booster

DC-In

Control-Interface

Track Out

Diagnostic

01 02 03 04 05 06 07 08

ENTWICKLER: W. Kufer		DATENAME: BiDiB_GBM_Boost_1.8.1	
ZEICHNER:		Last mod: 06.11.2013 15:13:56	
AUFTR.-NR.:		Blatt: 4/4	
GER.-NR.:		zu GERÄT:	

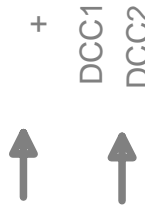
26.02.2013: added R89
26.02.2013: added R45 and R46
18.02.2013: changed R34 10k->1k

1V5A

(V_{sense}) = (I_{load}) * 100
V_{sense}) = 15 mV/A

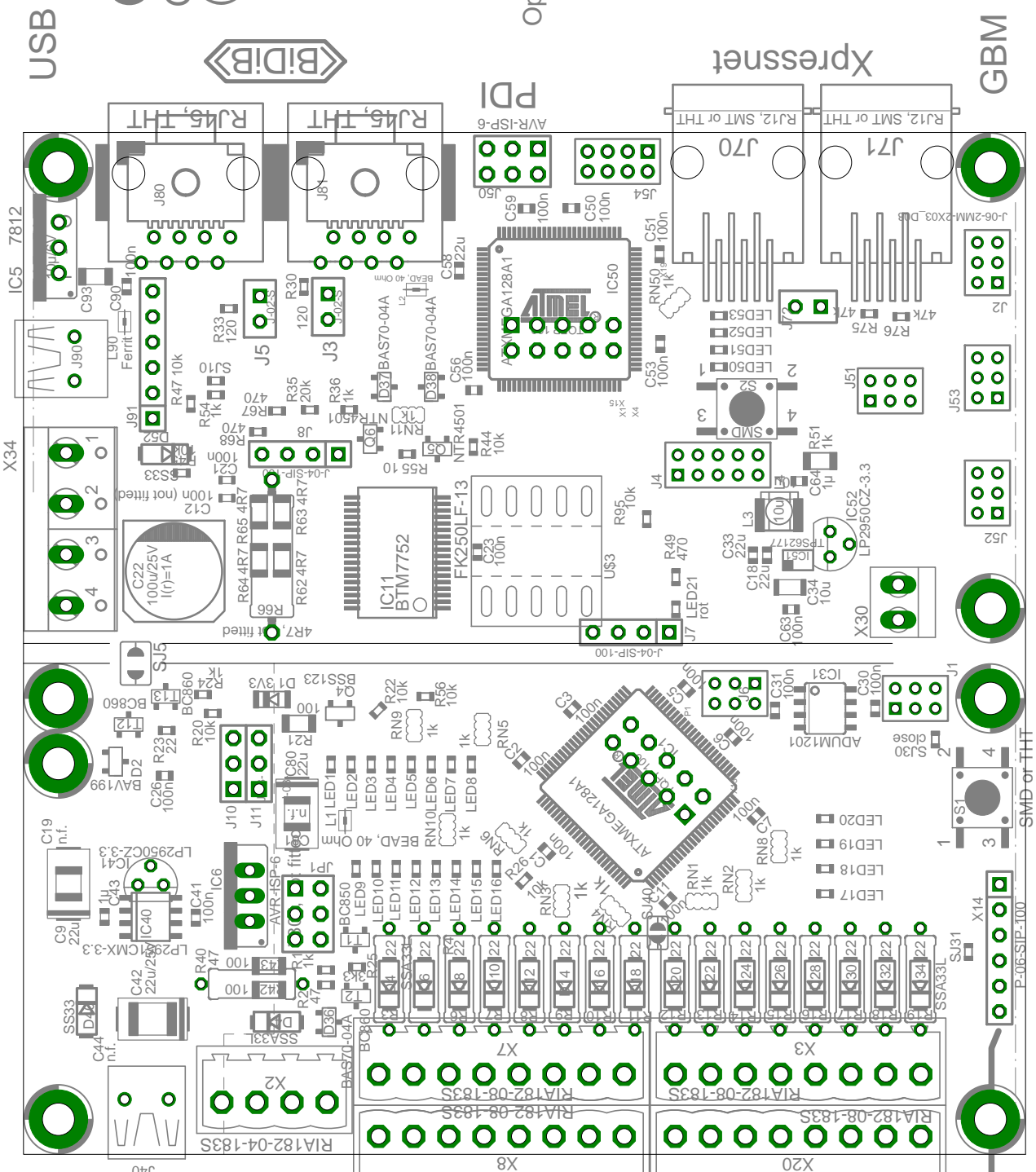
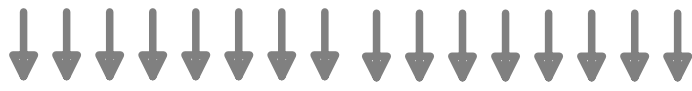
www.opendcc.de

Aux. Power
(no PC!)



- DCC1
- DCC1
- DCC1
- DCC1
- DCC1
- DCC1
- DCC1
- DCC1
- DCC1
- DCC1
- DCC1
- DCC1
- DCC1
- DCC1
- DCC1
- DCC1

To Tracks



OpenDCC
GBM-BiDi-Boost
(c) W.Kufer

Version:
1.8.1
11/2013

Open: Close:

GBM

GBM GBM EXT.STOP

FTDI-Debugport

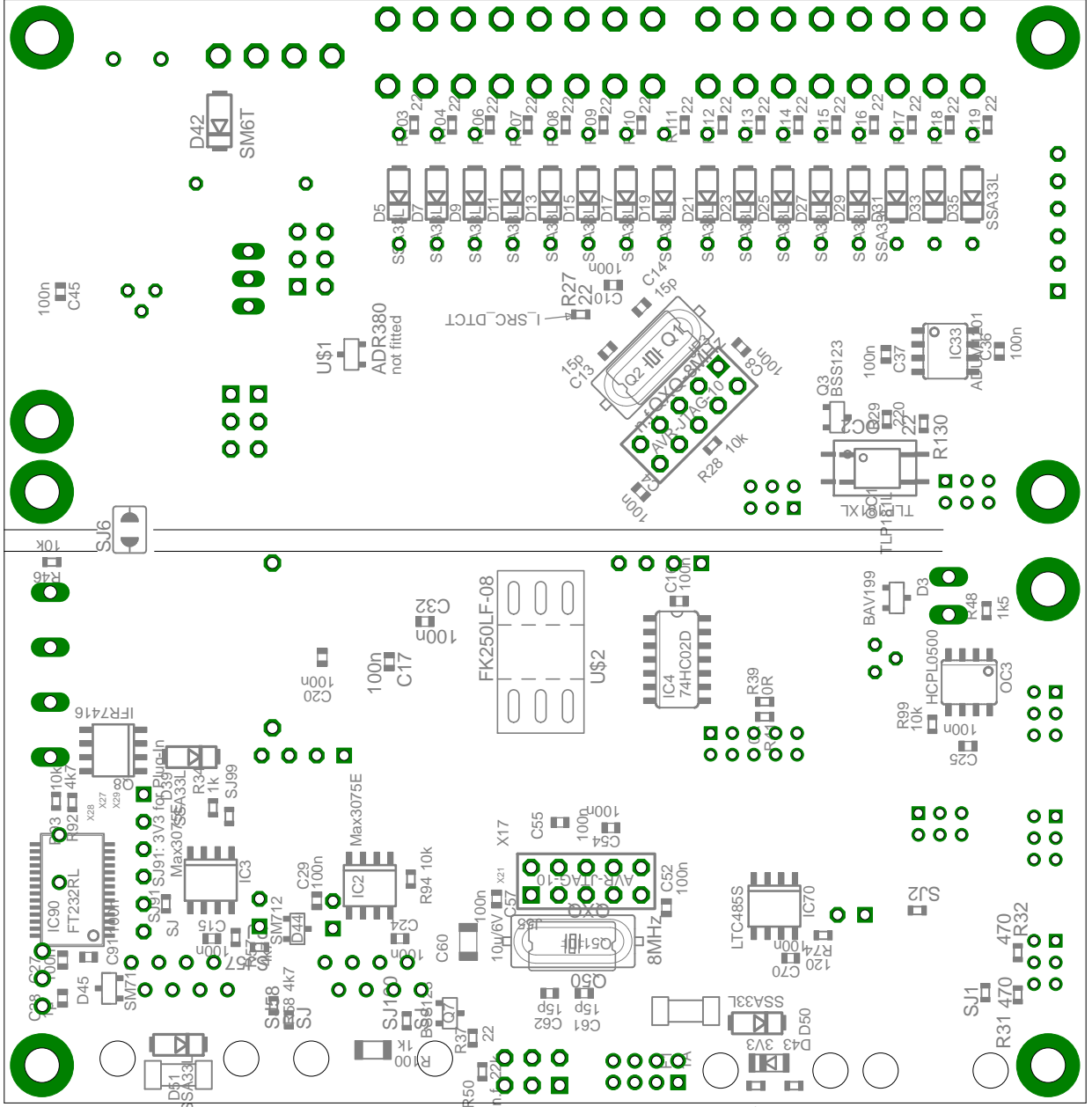
USB



Xpressnet

SMD or THT

P-06-SIP-100



F2
1A

R52
4k7
R53
10k